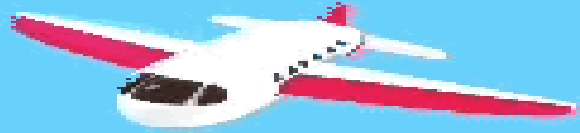


THE VILLAGES AVIATION CLUB



june

2019 Safety Brief

BRIEFING THE AIRPORT DIAGRAM

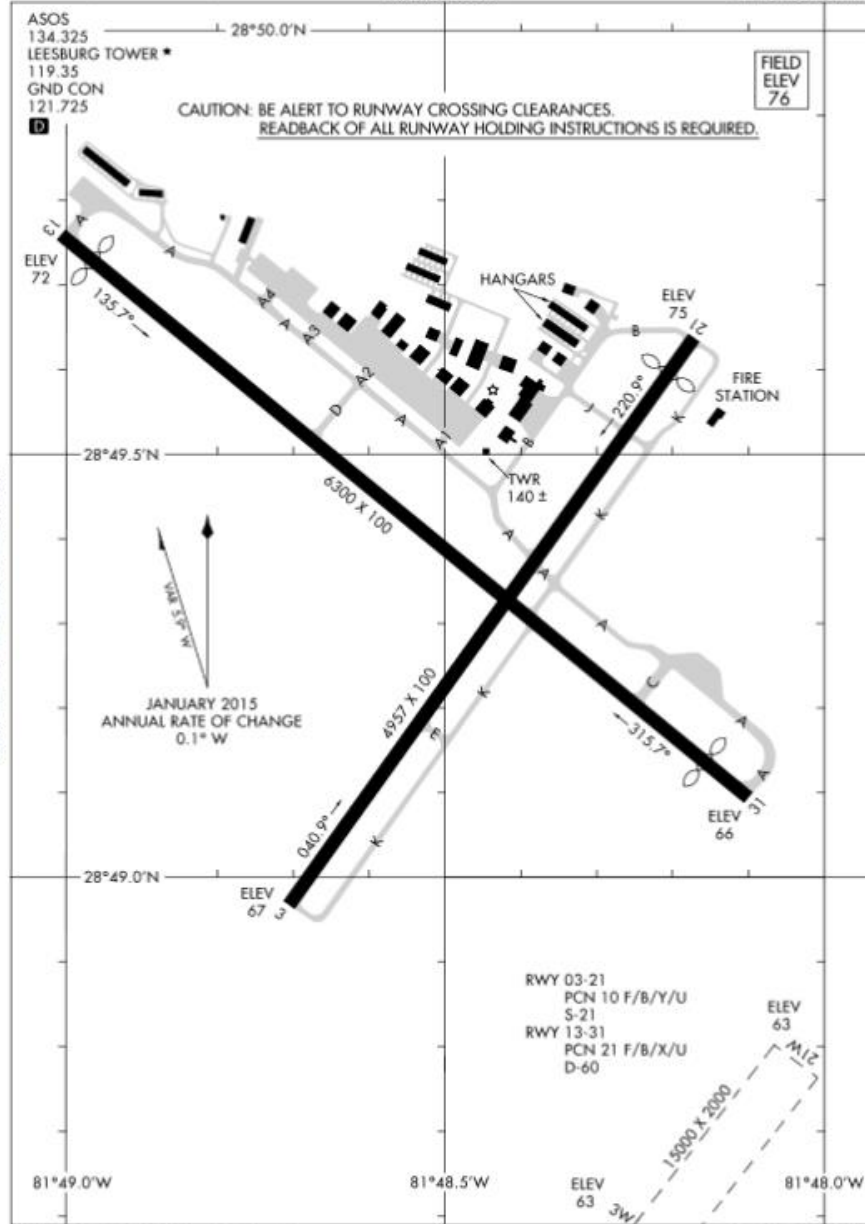
- FAR 91.103 requires the pilot in command to become familiar with all information concerning that flight. That would include all runway and NOTAM information for your departure and destination fields, departure, enroute and destination weather, NOTAMS, and airfield information for your departure and destination.

An briefing sets expectations for the pilot and/or crew which keeps the aircrew ahead of the aircraft

19115
AIRPORT DIAGRAM

AL-6676 (FAA)

LEESBURG INTL (L.E.E.)
 LEESBURG, FLORIDA



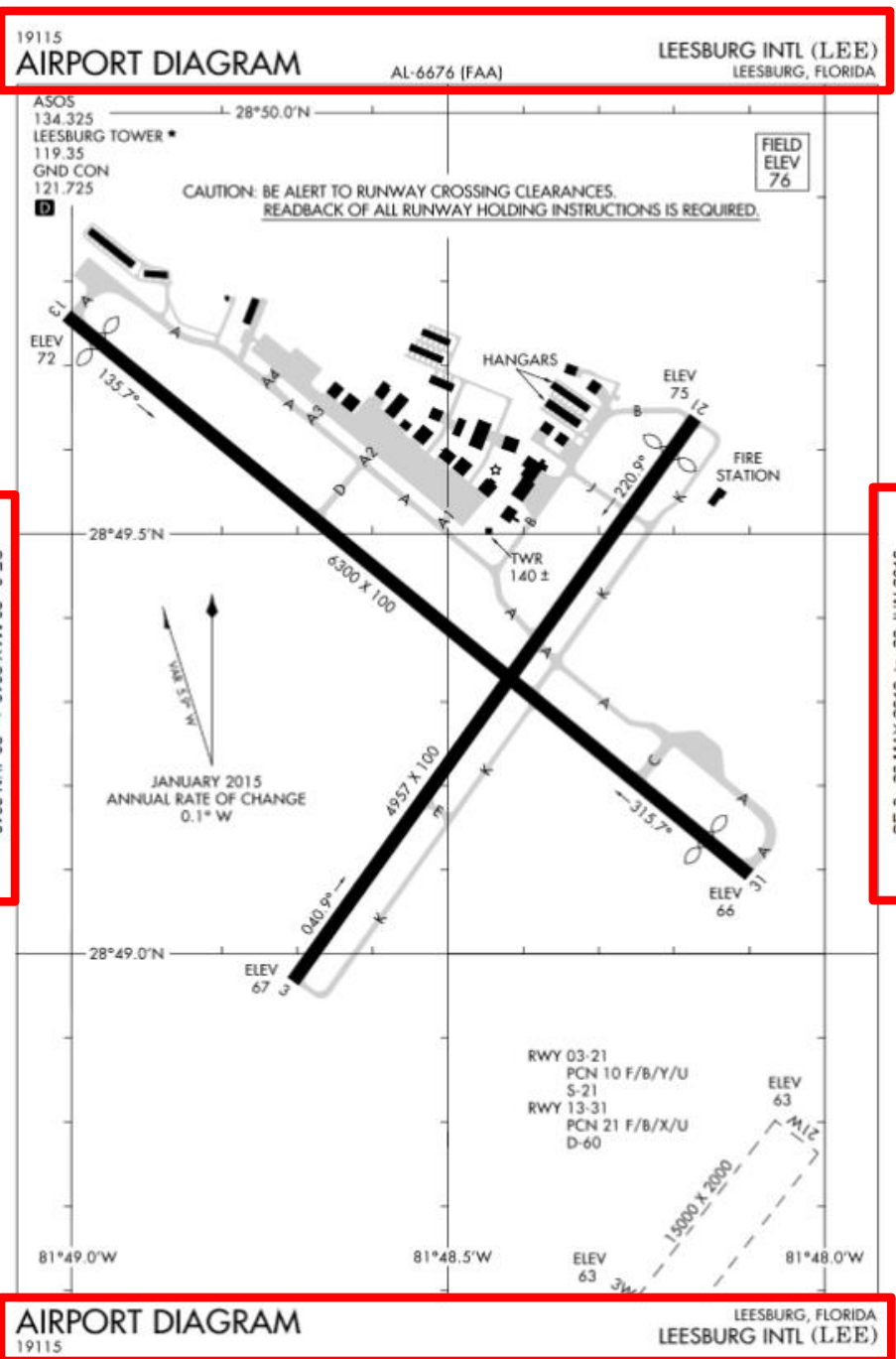
SE-3, 23 MAY 2019 to 20 JUN 2019

SE-3, 23 MAY 2019 to 20 JUN 2019

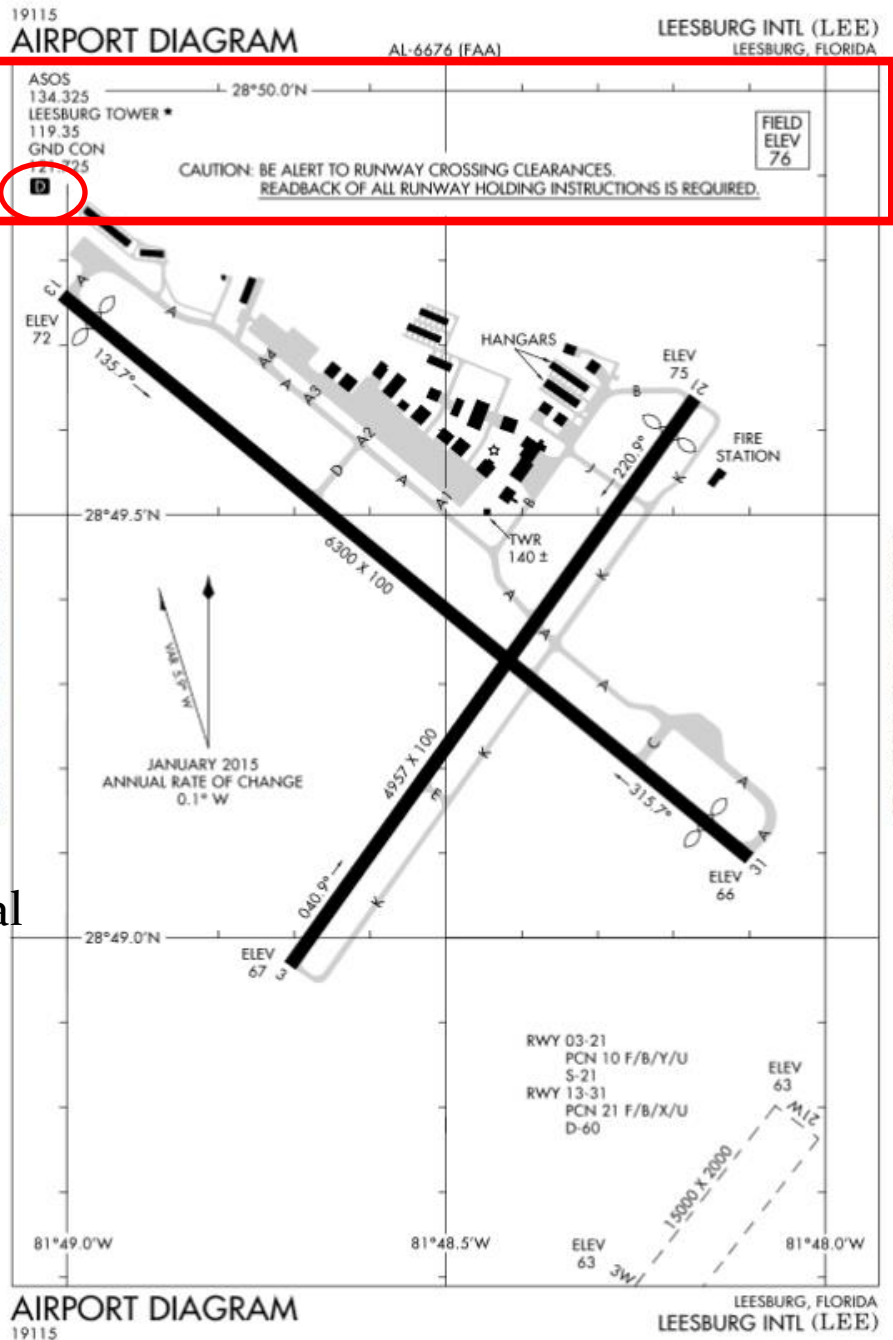
AIRPORT DIAGRAM
 19115

MARGINAL DATA

- Top, Bottom, and Side
- Type of Chart and Airport Name
- Current date of Chart
- City/State



A **D** symbol is shown to indicate runway declared distance information available, see appropriate Chart Supplement for distance information.


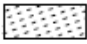


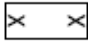





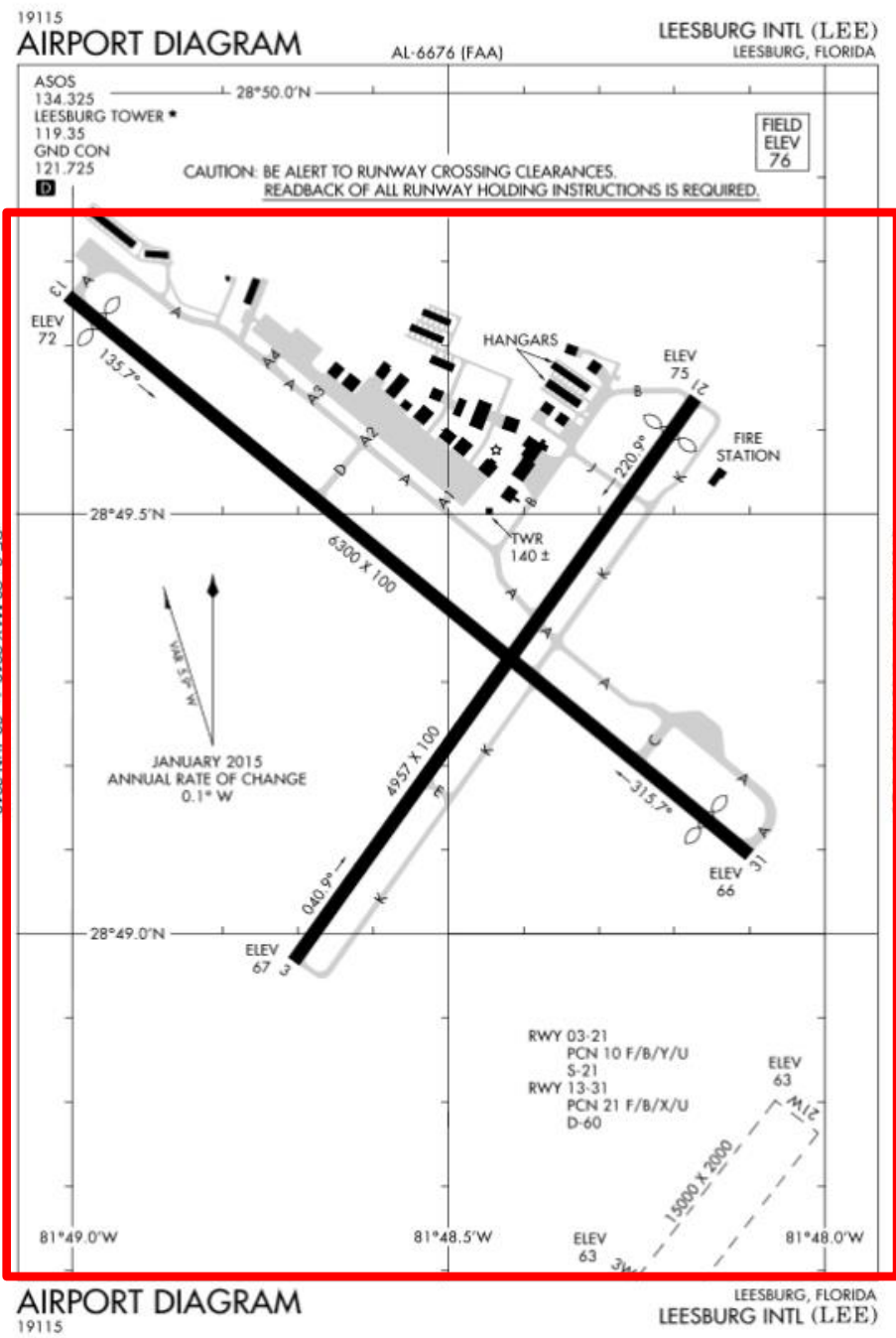
PILOT BRIEFING SECTION

- Frequencies/Field Elevations
- Notes/Symbols
- Frequencies in the Order of Use for arrival

PLAN VIEW


Runways

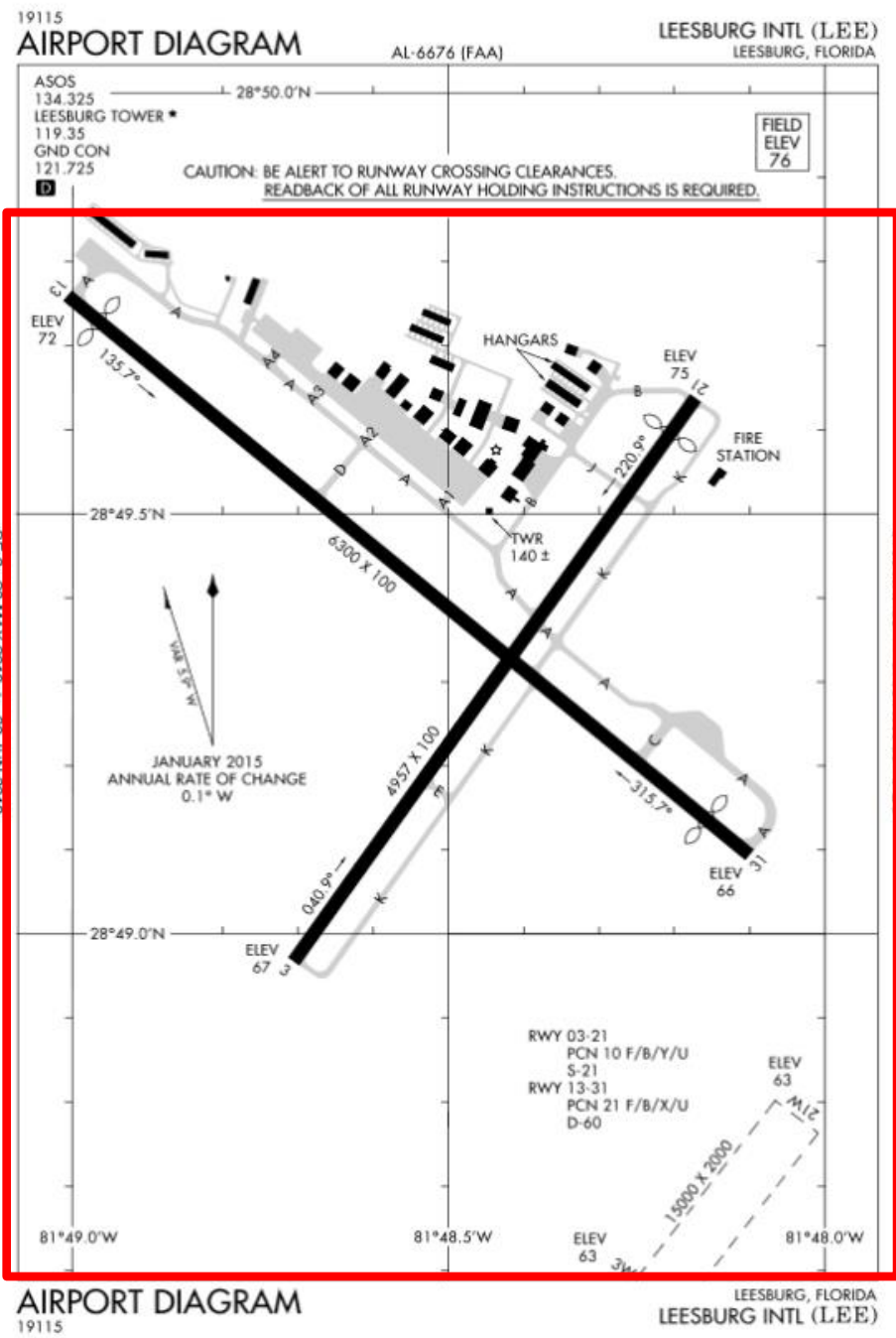
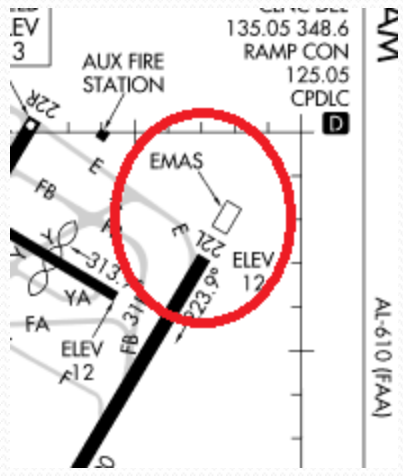
			
Hard Surface	Other Than Hard Surface	Stopways, Taxiways, Parking Areas, Water Runways	Displaced Threshold
			
Closed Runway	Closed Surface	Under Construction	Metal Surface



PLAN VIEW

- Runways
- Hard Surface
 - Other Than Hard Surface
 - Stopways, Taxiways, Parking Areas, Water Runways
 - Displaced Threshold
 - Closed Runway
 - Closed Surface
 - Under Construction
 - Metal Surface

ARRESTING SYSTEM  (EMAS)





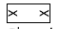





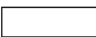
Engineered Materials Arrestor System EMAS




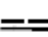







PLAN VIEW

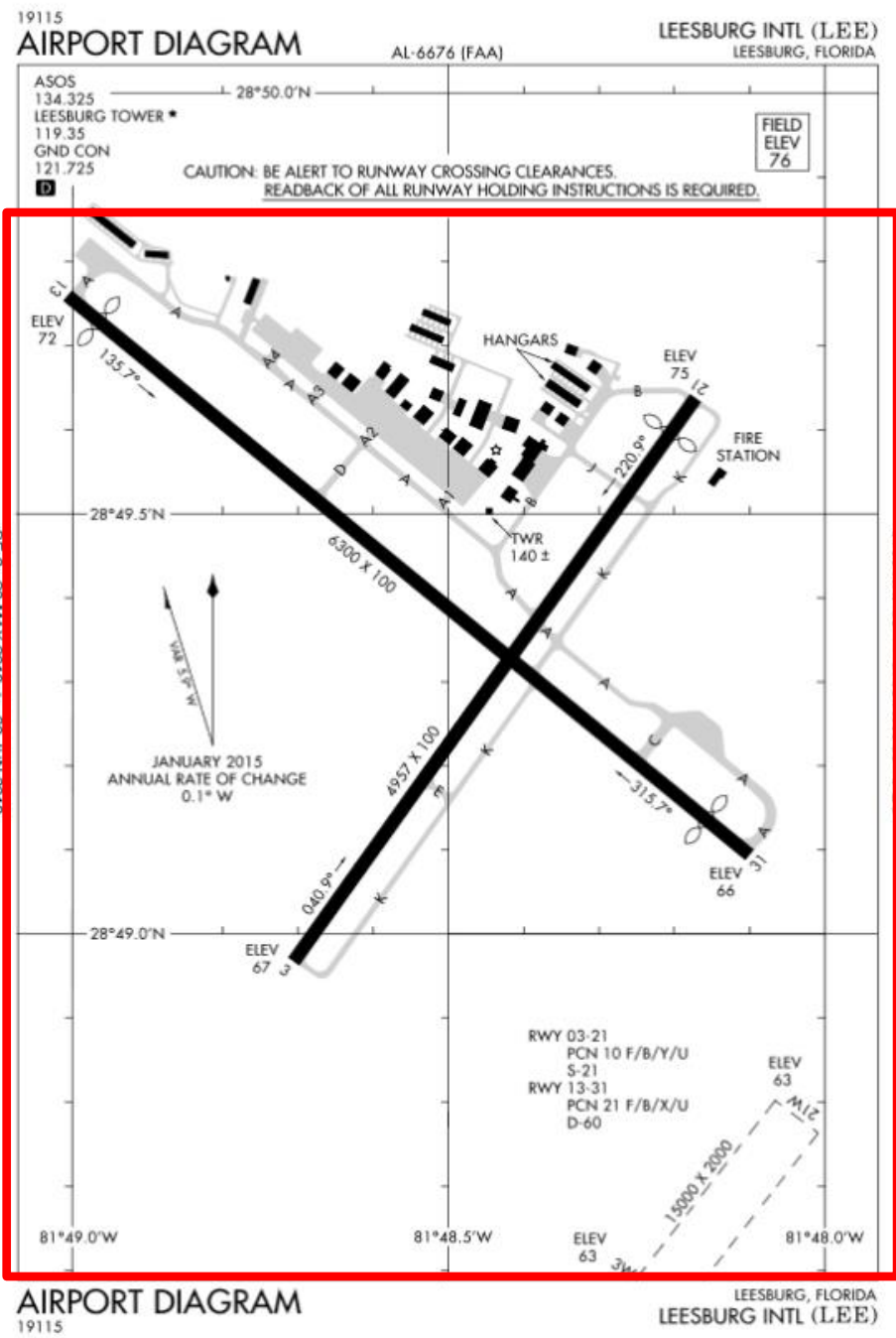
Runways

 Hard Surface	 Other Than Hard Surface	 Stopways, Taxiways, Parking Areas, Water Runways	 Displaced Threshold
 Closed Runway	 Closed Surface	 Under Construction	 Metal Surface

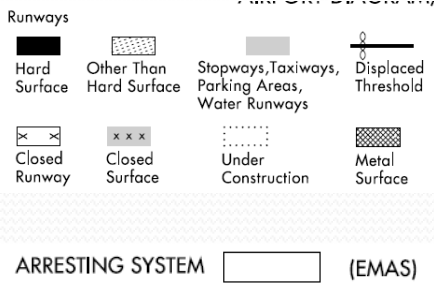
ARRESTING SYSTEM  (EMAS)

REFERENCE FEATURES

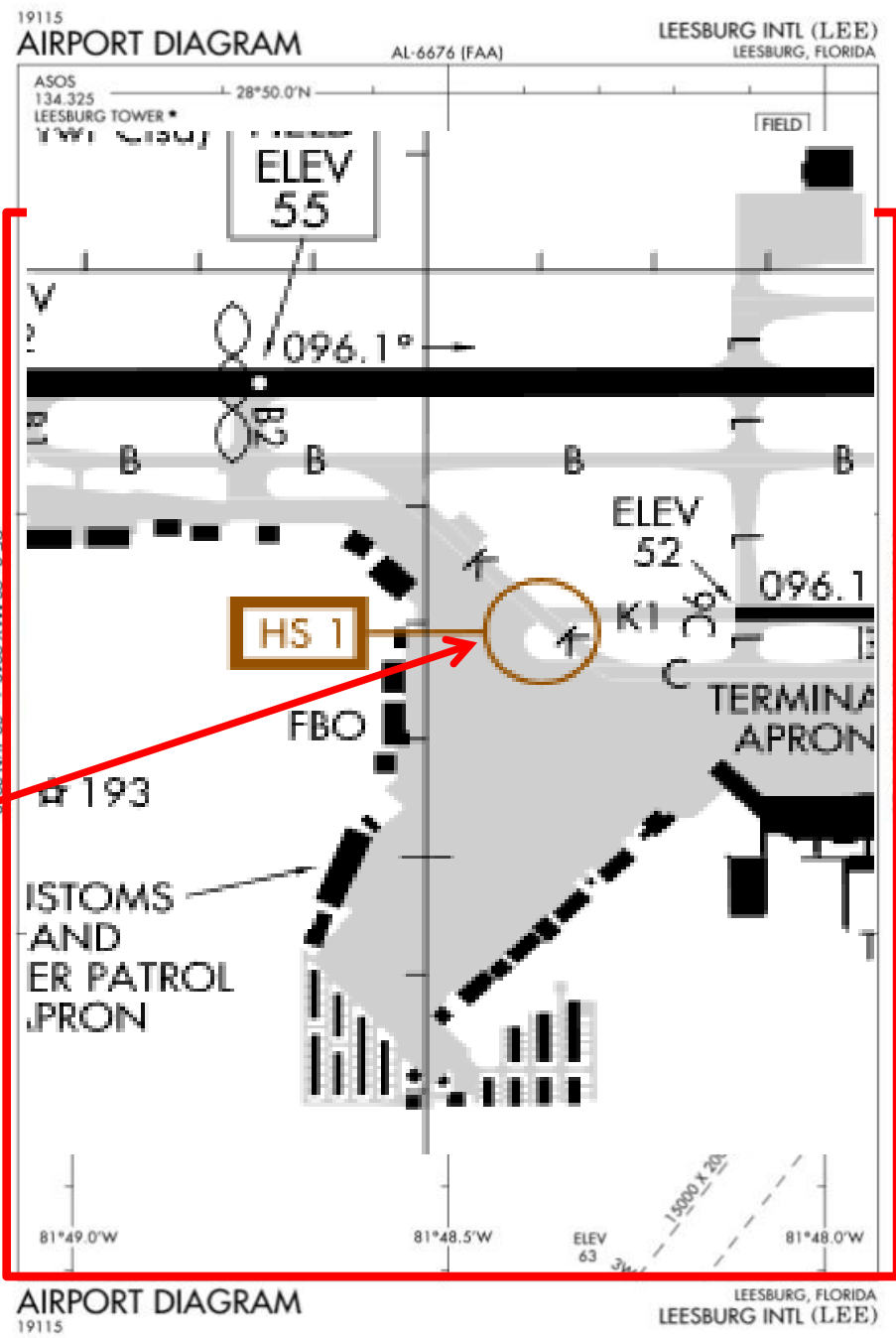
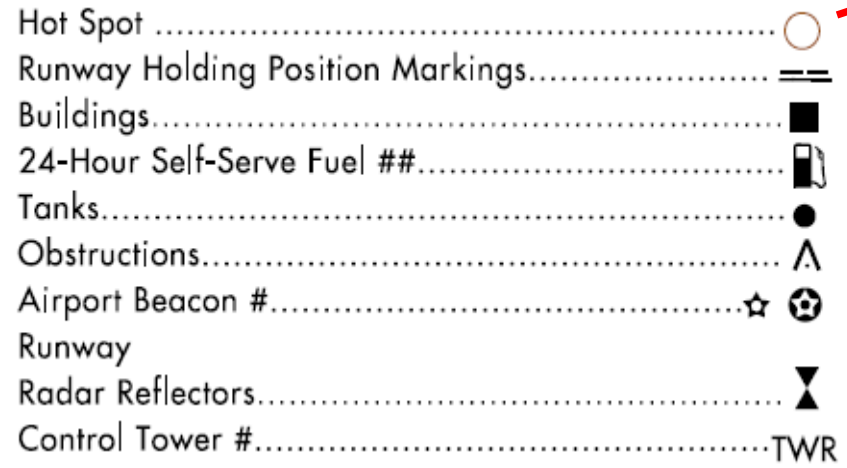
- Hot Spot 
- Runway Holding Position Markings..... 
- Buildings..... 
- 24-Hour Self-Serve Fuel ##..... 
- Tanks..... 
- Obstructions..... 
- Airport Beacon #..... 
- Runway Radar Reflectors..... 
- Control Tower #.....  TWR



PLAN VIEW



REFERENCE FEATURES

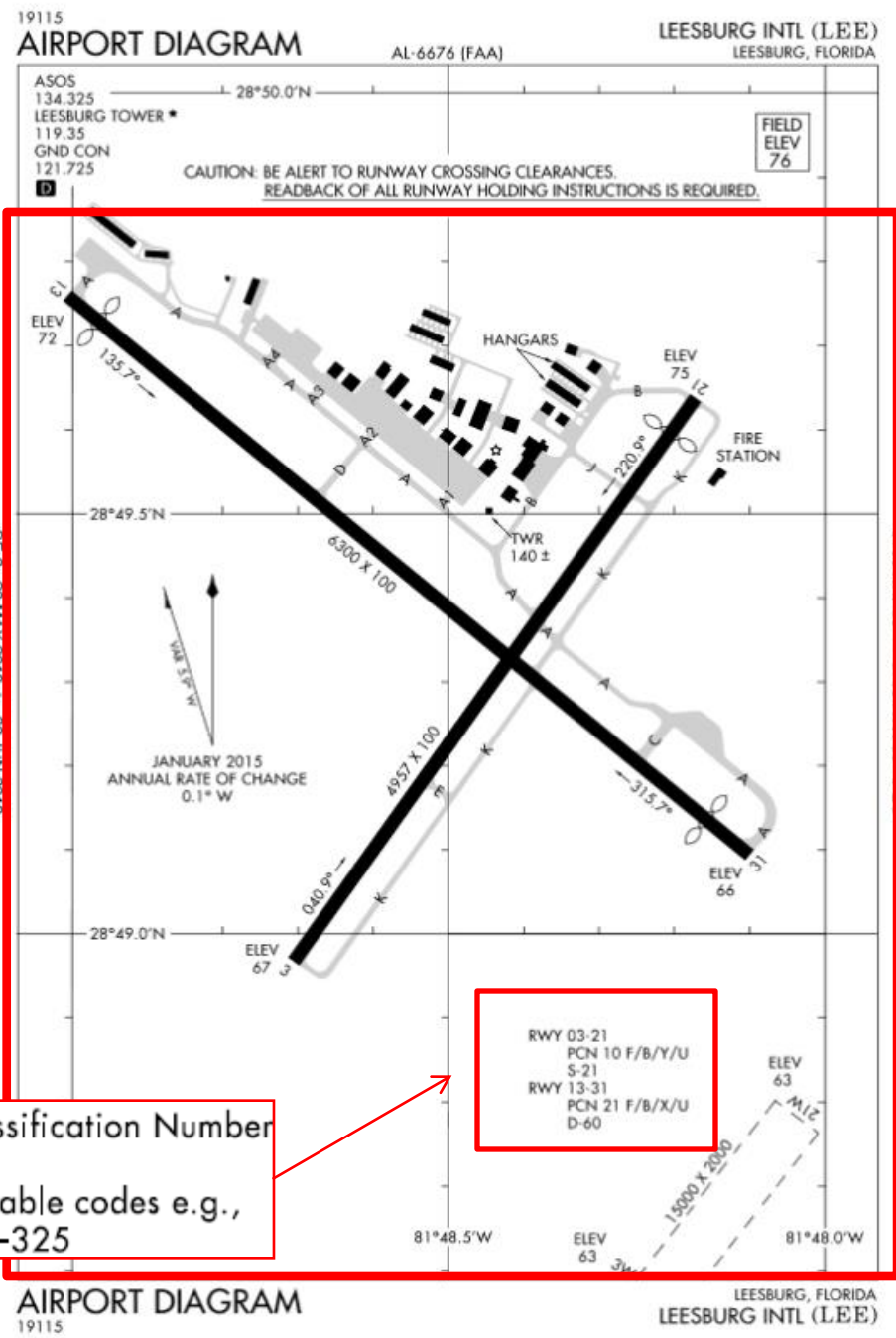


PLAN VIEW

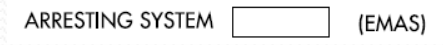
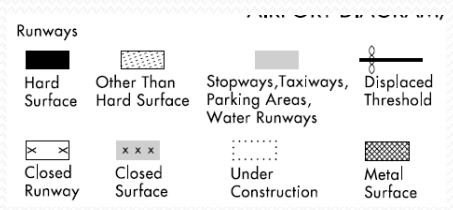
- Runways**
- Hard Surface
 - Other Than Hard Surface
 - Stopways, Taxiways, Parking Areas, Water Runways
 - Displaced Threshold
 - Closed Runway
 - Closed Surface
 - Under Construction
 - Metal Surface
- ARRESTING SYSTEM** (EMAS)

- REFERENCE FEATURES**
- Hot Spot
 - Runway Holding Position Markings
 - Buildings
 - 24-Hour Self-Serve Fuel ##
 - Tanks
 - Obstructions
 - Airport Beacon #
 - Runway Radar Reflectors
 - Control Tower #

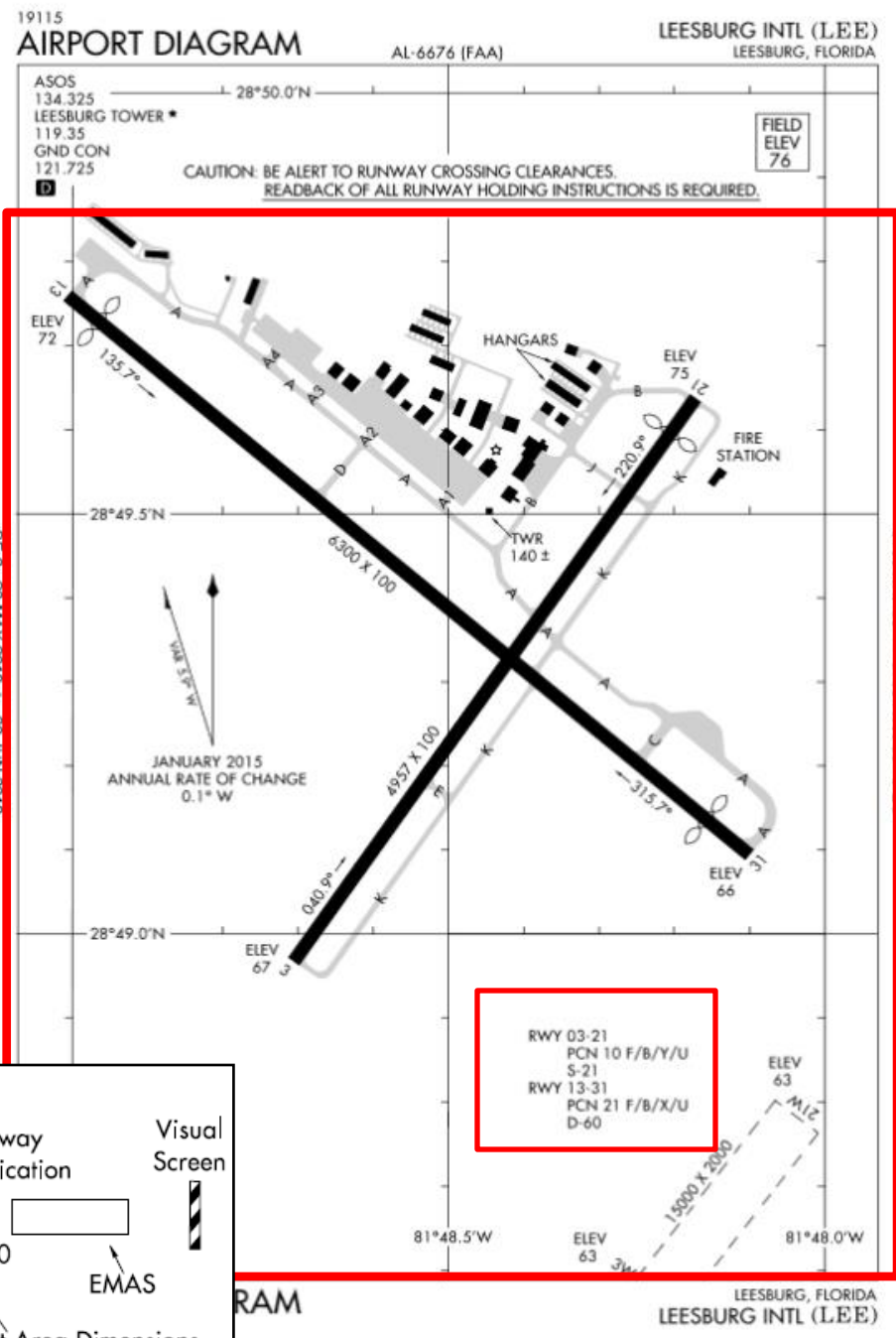
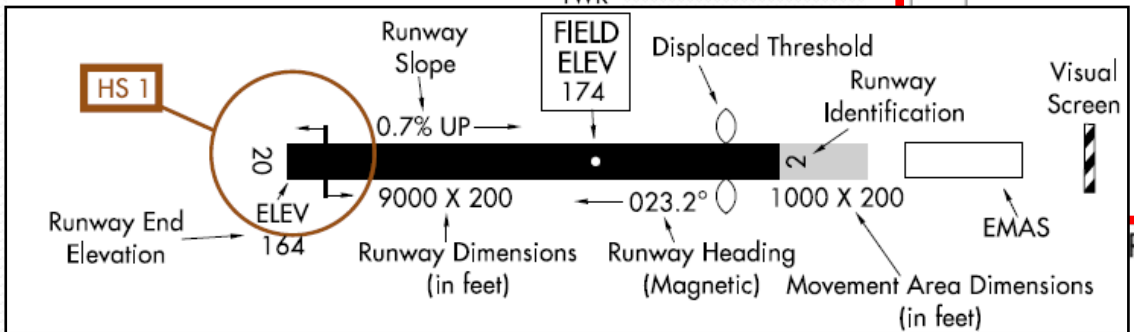
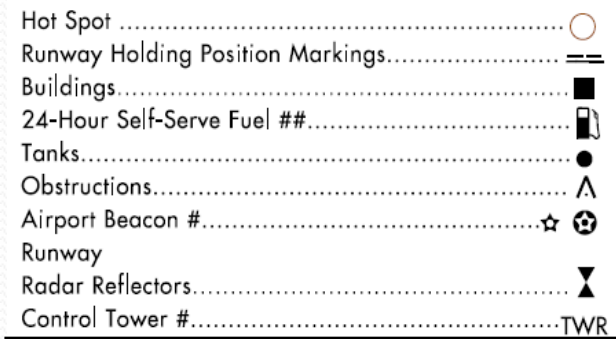
Runway Weight Bearing Capacity/or PCN Pavement Classification Number is shown as a codified expression. Refer to the appropriate Supplement/Directory for applicable codes e.g., RWY 14-32 PCN 80 F/D/X/U S-75, D-185, 2S-175, 2D-325



PLAN VIEW



REFERENCE FEATURES

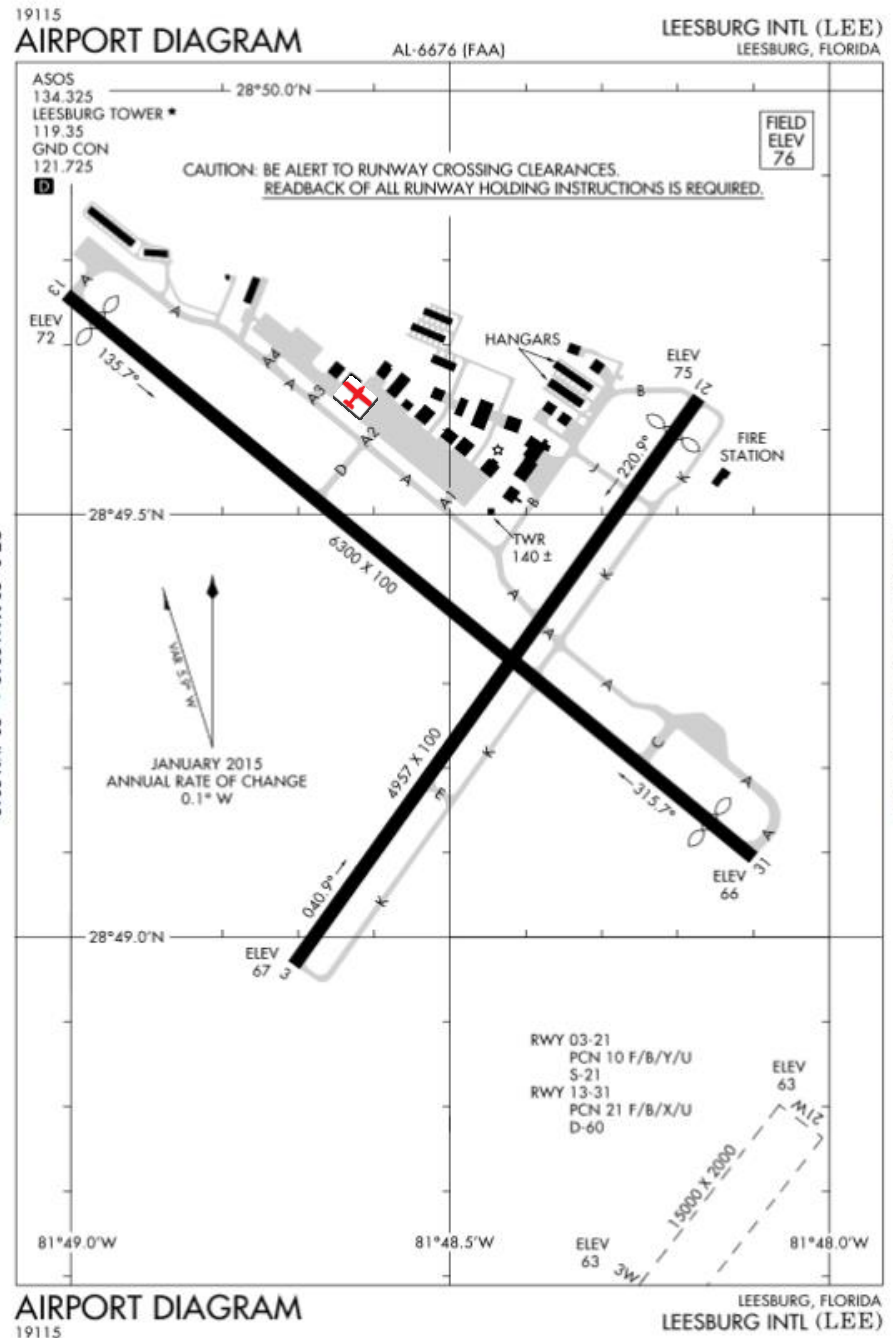


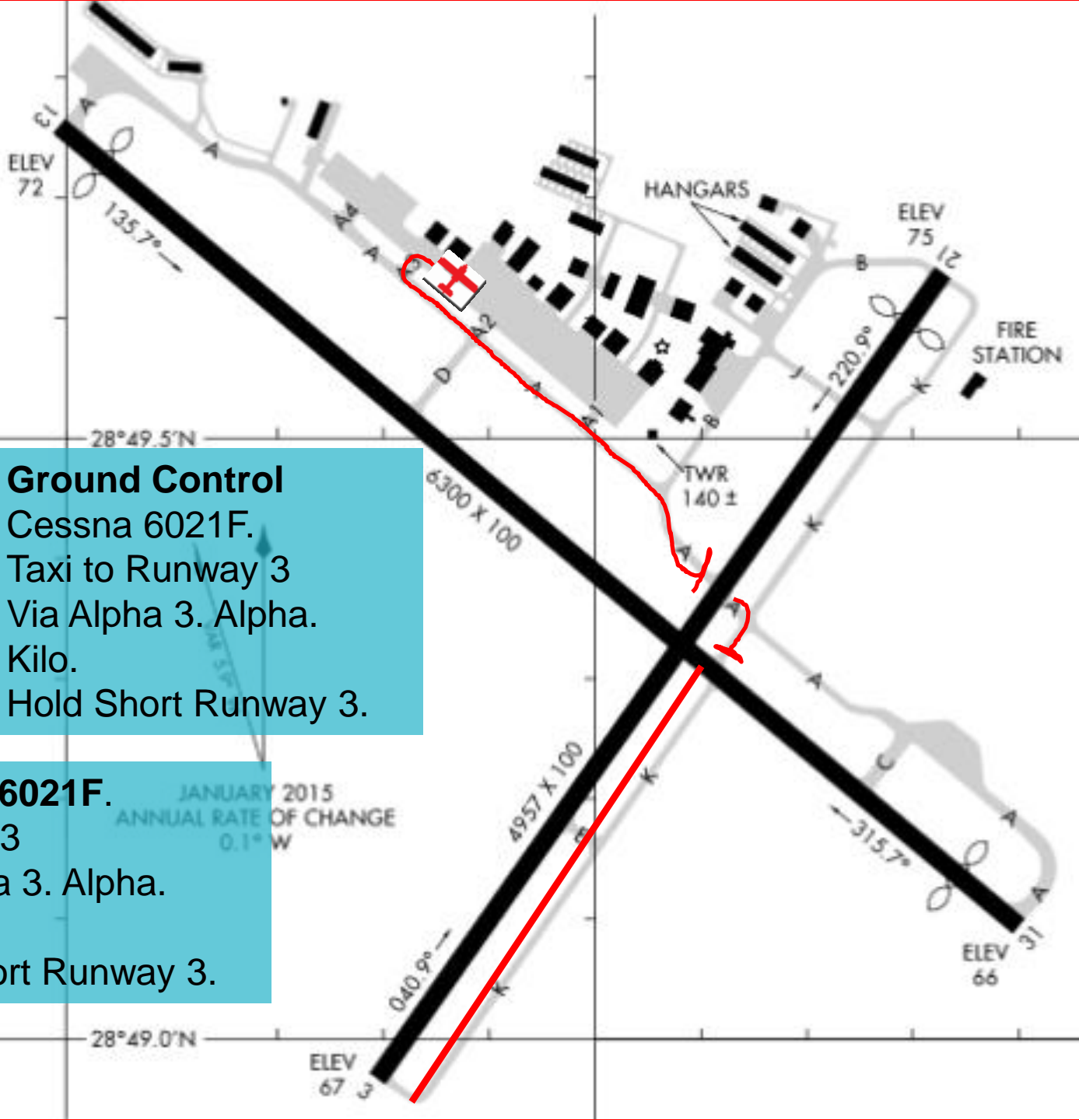
WHEN CALLING GROUND CONTROL...

- - HAVE AIRPORT DIAGRAM OUT BEFORE CALLING FOR TAXI CLEARANCE
- - WHEN ATC CLEARS YOU TO RUNWAY, MARK ROUTE ON CHART, INCLUDING RESTRICTIONS
- -NOTE 'HOT SPOTS', Be Aware.
- - GIVE YOURSELF ENOUGH TIME, RESOLVE ANY QUESTIONS OR DOUBTS
- -KNOW TAXIWAY AND RUNWAY MARKINGS AND SIGNS
- -REDUCE RISK OF RUNWAY INCURSIONS

Call for taxi

Leesburg Ground.
Cessna 6021F.
Alpha 3.
Taxi for Takeoff.
VFR Gainesville with
One Minute
Weather



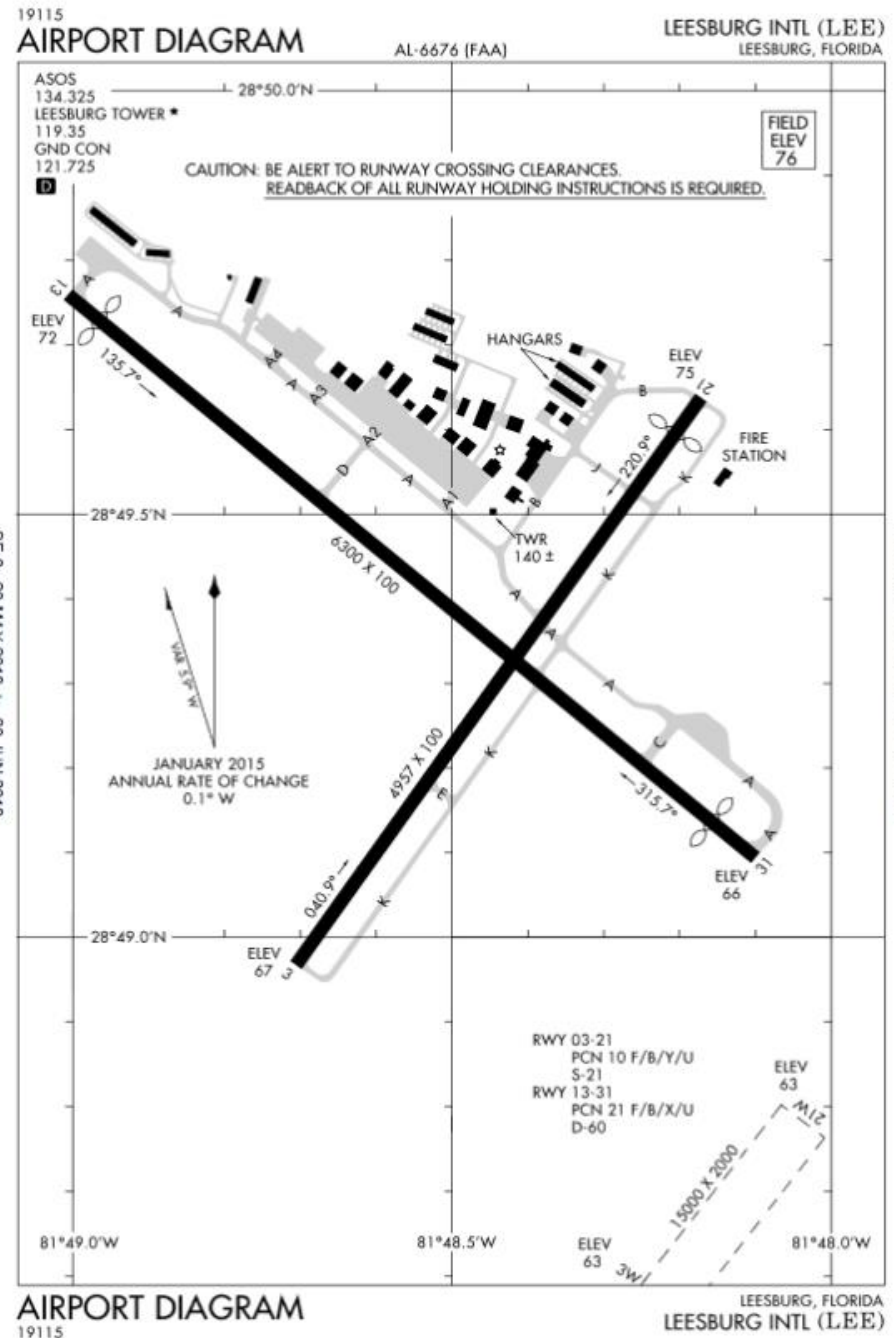


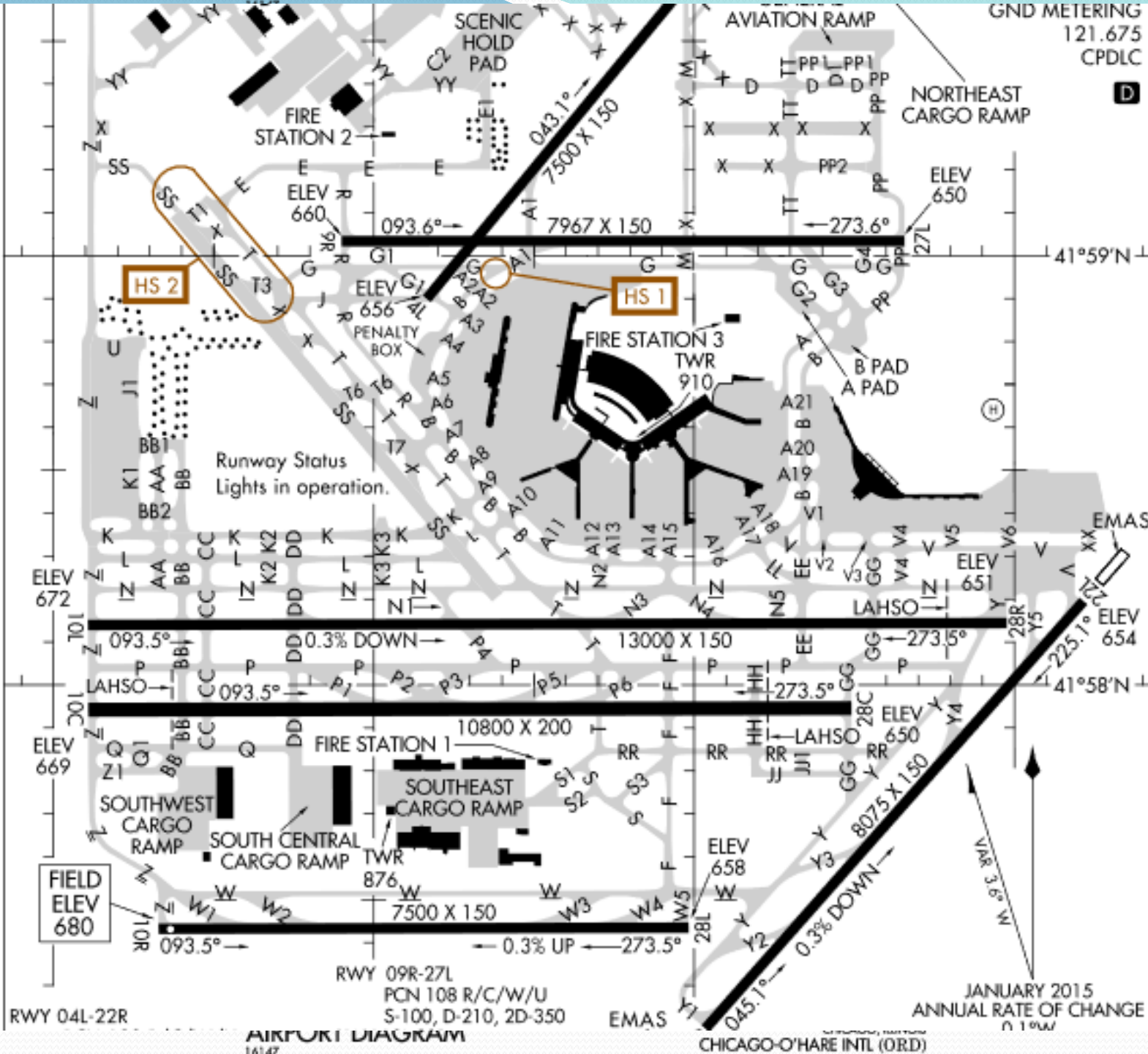
Ground Control
Cessna 6021F.
Taxi to Runway 3
Via Alpha 3. Alpha.
Kilo.
Hold Short Runway 3.

Cessna 6021F.
Runway 3
Via Alpha 3. Alpha.
Kilo.
Hold Short Runway 3.

AIRPORT DIAGRAM

- When Landing, review Airport Diagram for Displaced Thresholds, Obstacles, etc.
- Note Runway Length
- Plan Turn off, depending on airport destination





EC-3, 20 JUN 2019 to 18 JUL 2019










You are about to hear an Air Traffic Controller from the Chicago-O'hare International airport giving completely consecutive taxi clearances with even no breath-taking.

The South part of the airport was specially busy for outbounds so this ATC decided to do this. Clear and organized communications mean less delay and more efficiency for everyone!



Fly Safe.
Use your Airport Diagram

WINGS SEMINARS

Date	Title and Description 	Location
6/13/2019 19:00 EDT SO1592535	Regulatory Roadblocks Reduction -- Part 23 Revisions of Part 23 and their impact on General... Audience discussion of Part 23 revisions impact. The GAJSC has determined that GA is going through a...	Orlando, FL  
6/15/2019 11:00 EST SO3592148	CFIT - Controlled Flight Into Terrain VFR into IMC and Loss of Situational Awareness... CFIT, Controlled Flight Into Terrain, is one of the deadliest and most frequent General Aviation accident...	Plant City, FL  
6/17/2019 19:00 EDT SO1593007	IMC Club Meeting - Runway Incursions and Wrong Surface Departures and Landings Surface Deviations - a Discussion and Analysis of... Learn about the impacts and avoidance strategies of runway incursions and wrong surface departures...	Sanford, FL  
6/19/2019 18:00 EST SO1592661	Quarterly Safety Meeting Michael Hare will present 'Positive Aircraft... As in previous Safety Meetings we will share information and experience on relevant subjects of interest to...	Gainesville, FL   22 seats remaining 8 seats remaining.

WWW.FAASAFETY.GOV

Have a Great (and Safe) Summer
See you in September

